

## What if gov't agencies become fully privatized?

### Rating and spread levels likely to change as private-sector business corporations

- Full privatization of government agencies will not be implemented unless financial condition sound; default risk thus low for now after full privatization, putting aside long-term risk
- However, there is risk of change in rating and spread levels as they are assessed relative to those of other private-sector business corporations in same sector; DBJ and Shoko Chukin Bank bonds partially factored in full privatization for some time, which can be used as reference

Credit Memorandum JCRE439  
FICC Research Dept.

Senior Credit Analyst  
**Kouji Hamada**  
(81) 3 5555-8791  
kouji.hamada@daiwa.co.jp



Daiwa Securities Co. Ltd.

### Consideration on ratings and spreads in case of full privatization of gov't agencies

#### What if gov't agencies become fully privatized?

Although full privatization of Shoko Chukin Bank had been indefinitely postponed, the bank's improper financing scandal raked over the privatization issue. *Doraemon* (character in Japanese comic) has a gadget called the "What-if phone box." What will happen if we say "what if government agencies become fully privatized?" to the receiver in the box?

#### Bankruptcy risk means bond default risk

Government agencies have two credit risks—one is risk of bankruptcy and the other is risk of full privatization. The former means risk of bond default when government agencies are in a situation where management would find itself in a difficult position following the government's rejection of support for continued losses at agencies.

#### Risk of full privatization means that of change in rating and spread levels

The risk of full privatization does not immediately lead to defaults. Unless the financial condition is sound, full privatization would not be implemented. The default risk is thus low for the time being after full privatization, putting aside long-term risk. Government agencies' ratings and spreads are determined based on the premise of the existence of government support. However, once they become private-sector business corporations, government support would decline and stand-alone valuation (such as business risk and financial position) would be compared with other private-sector business corporations in the same sector. The risk of full privatization is, firstly, a change in rating and spread levels. Depending on the situation, there is a possibility of rating downgrades and widening of spreads.

#### J-Power only full privatization case of FILP agency

#### Few cases of full privatization after starting to issue FILP agency bonds

Even without a "What-if phone box," we can learn how ratings and spreads changed via surveys of past full privatization cases of government agencies. However, government agencies started to be assigned ratings and issue publicly offered bonds in the market (i.e., FILP agency bonds) in FY01. From FY01 onward, only Electric Power Development (J-Power) was fully privatized (in Oct 2004) among government agencies that issue FILP agency bonds. Furthermore, as the full privatization of J-Power was decided by the Cabinet in June 1997, its rating and issuance spread factored in full privatization from the initial launch, as explained later in this report.

#### Full privatization partially reflected at DBJ, Shoko Chukin Bank

In November 2005, on the other hand, the Council on Economic and Fiscal Policy announced a basic guideline for policy finance reform, and decided to fully privatize Development Bank of Japan (DBJ) and Shoko Chukin Bank. Although the decision has not yet been realized due to the influence of the Lehman crisis and Great East Japan Earthquake, their ratings and spreads have partially factored in full privatization for some time. These cases can be used as reference.

**After full privatization, ratings determined in comparison with private-sector business corporations in same sector**

### Ratings changed to level of private-sector business firms in same sector

Here, we look at the basic way of thinking for ratings at the time of full privatization. Ratings of government agencies are decided based on their stand-alone valuation plus government support. Accordingly, in the case of or just before the implementation of full privatization, their ratings are decided based on stand-alone valuation in comparison with other private-sector business corporations in the same sector, reflecting the absence of government support or a valuation decline to the level of private-sector business corporations.

**DBJ: Downgraded from Japan's sovereign rating level due to decision on full privatization policy**

All ratings introduced in this report are R&I's. As of June 2001, DBJ's rating was AAA, the same as Japan's sovereign rating. However, the rating was downgraded by two notches from AAA to AA in February 2007, reflecting the decision on full privatization. The rating agency attributed the downgrade to factoring in DBJ's stand-alone valuation and government support during the transitional stage. Subsequently, full privatization was indefinitely postponed, but it has not yet been withdrawn. The current rating (AA) has not thus recovered to the same level as Japan's sovereign rating (AA+).

**Shoko Chukin Bank: Rating outlook changed to negative due to reconsideration of full privatization**

Shoko Chukin Bank was assigned a rating in January 2007 after the decision to fully privatize the bank. The rating was AA-, three notches lower than Japan's sovereign rating. The bank's rating was not downgraded together with DBJ's rating. However, once full privatization was reconsidered following the disclosure of the improper financing scandal, the possible decline in government's involvement or support intention was factored in, leading to a change in the rating outlook to negative in January 2018.

**Due to full privatization, rating of J-Power moving in tandem with that of private-sector electric power firms**

J-Power obtained a rating in February 2003, and it was fully privatized in October 2004. As mentioned earlier in this report, as the policy to fully privatize J-Power was decided by the Cabinet in June 1997, the firm was already assessed as a private-sector business corporation when the rating was assigned. The initial rating was AA+, which is the level of government agencies. However, it would be more accurate to say that it is the level of private-sector electric power companies. For example, Kansai Electric Power was also rated as AA+ in the same period. Since then, as J-Power has faced several downgrades due to the nuclear power plant accident caused by the Great East Japan Earthquake together with other electric power firms, its current rating is A+, the same as that of Kansai Electric Power. This is one case that ratings after full privatization are determined in comparison with private-sector business corporations in the same sector.

**Japan Airlines was gov't agency, but faced default after full privatization**

We can point out other examples of former government agencies. Japan Airlines, which was fully privatized in 1987, is now rated A-, and ANA Holdings, a private-sector firm from its establishment, is also rated A-. However, the rating of Japan Airlines was downgraded to D in January 2010 owing to business failure. This shows one case that former government agencies faced defaults due to deterioration in business conditions even if business conditions immediately after full privatization went well.

### Spreads also changed similar to level of business corporations in same sector

**After full privatization, spreads decided as corporate bonds**

We now look at the basic way of thinking on spreads at the time of full privatization. Creditworthiness of government agencies is decided based on their stand-alone valuation plus government support. Accordingly, in the case of or just before the implementation of full privatization, their spreads are decided based on stand-alone valuation in comparison with other private-sector business corporations in the same sector. With respect to the order of spreads, government-guaranteed bonds currently rank top, followed by municipal bonds, government agency bonds, and corporate bonds. Accordingly, the category shifts from government agency bonds to corporate bonds.

**DBJ's spread decided in comparison with megabank bonds, factoring in full privatization**

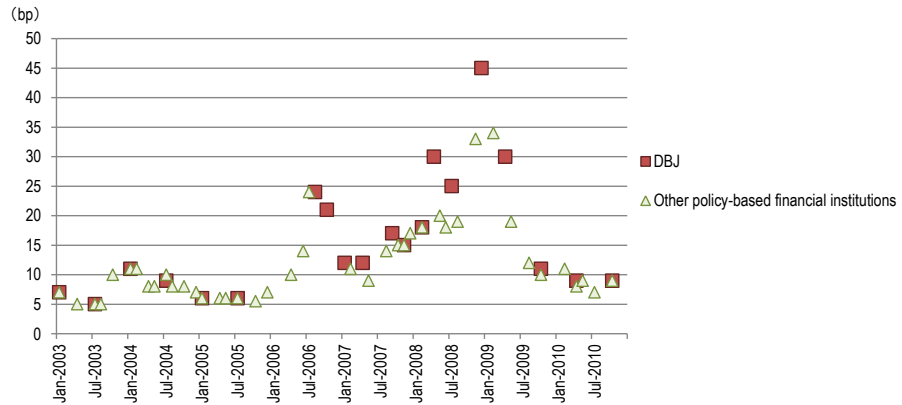
Regarding DBJ, the policy to fully privatize the bank was determined in November 2005 at the Council on Economic and Fiscal Policy. After a bill concerning policy finance reform was enacted at the ordinary Diet session in 2007, DBJ became a joint-stock company in October 2008. Chart 1 shows the issuance spread of 5-year bonds launched by policy-based financial institutions. Around late 2008 to early 2009 when DBJ became a joint-stock company, the difference between the spread of DBJ and that of other institutions widened to around 10bp. This was not the result of factoring in possible default but the widening of the issuance spread in comparison with private-sector megabanks. In other words, the

issuance spread widened in advance, factoring in a shift to a private-sector financial institution due to implementation of full privatization.

**Due to postponed full privatization, spread of DBJ returned to same level of other policy-based financial institutions**

However, due to the global financial crisis triggered by the Lehman Brothers bankruptcy, full privatization of DBJ was postponed. In the latter half of 2009, the issuance spread tightened to the level of other policy-based financial institutions. Subsequently, full privatization was postponed again due to the Great East Japan Earthquake, and then it was shelved. To date, the issuance spread has been at the same level as that of other policy-based financial institutions.

**Chart 1: Issuance Spread of 5-year Bonds Launched by Policy-based Financial Institutions**

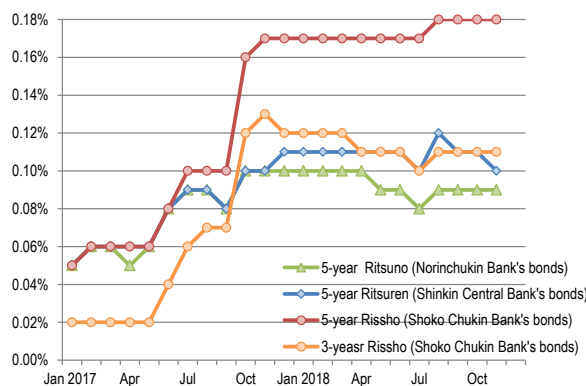


Source: Compiled by Daiwa Securities.

**Improper financing scandal caused resurgence of speculation on full privatization of Shoko Chukin Bank, leading to wider spread**

Similar to DBJ, the full privatization of Shoko Chukin Bank was shelved after having been postponed twice. Following disclosure of the inappropriate financing scandal in autumn 2016, a full-scale internal investigation started in spring 2017. Speculations on full privatization thus resurged in autumn 2017, immediately before the announcement of the investigation result, pushing up the issuance yield of both 3-year and 5-year bonds (Chart 2). In January 2018, the third-party committee at the Small and Medium Enterprise Agency proposed that full privatization should be reconsidered after Shoko Chukin Bank provides new services for four years. Speculations on full privatization are thus lingering and the issuance yield remains at a high level. That being said, partly because Shoko Chukin Bank is reducing the bond issuance amount, the bank is still providing lower yields than private-sector banks whose stand-alone valuation at rating agencies is similar to that of Shoko Chukin Bank.

**Chart 2: Issuance Spread of 3-year and 5-year Coupon Bank Debentures**



Source: Compiled by Daiwa Securities.

**J-Power's FILP agency bonds regarded as private-sector electric power company bonds from initial launch**

J-Power issued its first FILP agency bonds (10-year) in February 2003, with the issuance spread of 14bp. The spread of Tokyo Electric Power's 10-year bonds, also launched in February 2003, was 13bp, while that of New Tokyo International Airport Authority (public corporation, currently Narita International Airport) was 27bp. This reflected strong uncertainty about the outlook of government agencies because the Koizumi administration was considering the reform of special public corporations at that time. These spreads show that the market already regarded J-Power bonds as private-sector electric power company bonds before full privatization.

## Explanatory Document of Unregistered Credit Ratings

In order to ensure the fairness and transparency in the markets, Credit Rating Agencies became subject to the Credit Rating Agencies' registration system based on the Financial Instruments and Exchange Act. In accordance with this Act, in soliciting customers, Financial Instruments Business Operators, etc. shall not use the credit ratings provided by unregistered Credit Rating Agencies without informing customers of the fact that those Credit Rating Agencies are not registered, and shall also inform customers of the significance and limitations of credit ratings, etc.

### ■ The Significance of Registration

Registered Credit Rating Agencies are subject to the following regulations:

- 1) Duty of good faith.
- 2) Establishment of control systems (fairness of the rating process, and prevention of conflicts of interest, etc.).
- 3) Prohibition of the ratings in cases where Credit Rating Agencies have a close relationship with the issuers of the financial instruments to be rated, etc.
- 4) Duty to disclose information (preparation and publication of rating policies, etc. and public disclosure of explanatory documents).

In addition to the above, Registered Credit Rating Agencies are subject to the supervision of the Financial Services Agency ("FSA"), and as such may be ordered to produce reports, be subject to on-site inspection, and be ordered to improve business operations, whereas unregistered Credit Rating Agencies are free from such regulations and supervision.

### ■ Credit Rating Agencies

#### [Standard & Poor's]

##### The Name of the Credit Rating Agencies group, etc

The name of the Credit Rating Agencies group: S&P Global Ratings ("Standard & Poor's")

The name and registration number of the Registered Credit Rating Agency in the group: S&P Global Ratings Japan Inc. (FSA commissioner (Rating) No.5)

##### How to acquire information related to an outline of the rating policies and methods adopted by the person who determines Credit Ratings

The information is posted under "Unregistered Rating Information" (<http://www.standardandpoors.co.jp/unregistered>) in the "Library and Regulations" section on the website of S&P Global Ratings Japan Inc. (<http://www.standardandpoors.co.jp>)

##### Assumptions, Significance and Limitations of Credit Ratings

Credit ratings assigned by Standard & Poor's are statements of opinion on the future credit quality of specific issuers or issues as of the date they are expressed and they are not indexes which show the probability of the occurrence of the failure to pay by the issuer or a specific debt and do not guarantee creditworthiness. Credit ratings are not a recommendation to purchase, sell or hold any securities, or a statement of market liquidity or prices in the secondary market of any issues.

Credit ratings may change depending on various factors, including issuers' performance, changes in external environment, performance of underlying assets, creditworthiness of counterparties and others. Standard & Poor's conducts rating analysis based on information it believes to be provided by the reliable source and assigns credit ratings only when it believes there is enough information in terms of quality and quantity to make a conclusion. However, Standard & Poor's does not perform an audit, due diligence or independent verification of any information it receives from the issuer or a third party, or guarantee its accuracy, completeness or timeliness of the results by using the information. Moreover, it needs to be noted that it may incur a potential risk due to the limitation of the historical data that are available for use depending on the rating.

This information is based on information Daiwa Securities Co. Ltd. has received from sources it believes to be reliable as of March 7th, 2017, but it does not guarantee accuracy or completeness of this information. For details, please refer to the website of S&P Global Ratings Japan Inc. (<http://www.standardandpoors.co.jp>)

#### [Moody's]

##### The Name of the Credit Rating Agencies Group, etc

The name of the Credit Rating Agencies group: Moody's Investors Service ("MIS")

The name and registration number of the Registered Credit Rating Agency in the group: Moody's Japan K.K. (FSA commissioner (Rating) No.2)

##### How to acquire information related to an outline of the rating policies and methods adopted by the person who determines Credit Ratings

The information is posted under "Unregistered Rating explanation" in the section on "The use of Ratings of Unregistered Agencies" on the website of Moody's Japan K.K. (The website can be viewed after clicking on "Credit Rating Business" on the Japanese version of Moody's website ([https://www.moody.com/pages/default\\_ja.aspx](https://www.moody.com/pages/default_ja.aspx)))

##### Assumptions, Significance and Limitations of Credit Ratings

Credit ratings are Moody's Investors Service's ("MIS") current opinions of the relative future credit risk of entities, credit commitments, or debt or debt-like securities. MIS defines credit risk as the risk that an entity may not meet its contractual, financial obligations as they come due and any estimated financial loss in the event of default. Credit ratings do not address any other risk, including but not limited to: liquidity risk, market value risk, or price volatility. Credit ratings do not constitute investment or financial advice, and credit ratings are not recommendations to purchase, sell, or hold particular securities. No warranty, express or implied, as to the accuracy, timeliness, completeness, merchantability or fitness for any particular purpose of any such rating or other opinion or information, is given or made by MIS in any form or manner whatsoever.

Based on the information received from issuers or from public sources, the credit risks of the issuers or obligations are assessed. MIS adopts all necessary measures so that the information it uses in assigning a credit rating is of sufficient quality and from sources MIS considers to be reliable. However, MIS is not an auditor and cannot in every instance independently verify or validate information received in the rating process.

This information is based on information Daiwa Securities Co. Ltd. has received from sources it believes to be reliable as of April 16<sup>th</sup>, 2018, but it does not guarantee accuracy or completeness of this information. For details, please refer to the website of Moody's Japan K.K. ([https://www.moody.com/pages/default\\_ja.aspx](https://www.moody.com/pages/default_ja.aspx))

#### [Fitch]

##### The Name of the Credit Rating Agencies group, etc

The name of the Credit Rating Agencies group: Fitch Ratings ("Fitch")

The name and registration number of the Registered Credit Rating Agency in the group: Fitch Ratings Japan Limited (FSA commissioner (Rating) No.7)

##### How to acquire information related to an outline of the rating policies and methods adopted by the person who determines Credit Ratings

The information is posted under "Outline of Rating Policies" in the section of "Regulatory Affairs" on the website of Fitch Ratings Japan Limited (<https://www.fitchratings.co.jp/web/>)

##### Assumptions, Significance and Limitations of Credit Ratings

Ratings assigned by Fitch are opinions based on established criteria and methodologies. Ratings are not facts, and therefore cannot be described as being "accurate" or "inaccurate". Credit ratings do not directly address any risk other than credit risk. Credit ratings do not comment on the adequacy of market price or market liquidity for rated instruments. Ratings are relative measures of risk; as a result, the assignment of ratings in the same category to entities and obligations may not fully reflect small differences in the degrees of risk. Credit ratings, as opinions on relative ranking of vulnerability to default, do not imply or convey a specific statistical probability of default.

In issuing and maintaining its ratings, Fitch relies on factual information it receives from issuers and underwriters and from other sources Fitch believes to be credible. Fitch conducts a reasonable investigation of the factual information relied upon by it in accordance with its ratings methodology, and obtains reasonable verification of that information from independent sources, to the extent such sources are available for a given security or in a given jurisdiction. The assignment of a rating to any issuer or any security should not be viewed as a guarantee of the accuracy, completeness, or timeliness of the information relied on in connection with the rating or the results obtained from the use of such information. If any such information should turn out to contain misrepresentations or to be otherwise misleading, the rating associated with that information may not be appropriate. Despite any verification of current facts, ratings can be affected by future events or conditions that were not anticipated at the time a rating was issued or affirmed.

For the details of assumption, purpose and restriction of credit ratings, please refer to "Definitions of ratings and other forms of opinion" on the website of Fitch Rating Japan Limited.

This information is based on information Daiwa Securities Co. Ltd. has received from sources it believes to be reliable as of May 13<sup>th</sup>, 2016, but it does not guarantee accuracy or completeness of this information. For details, please refer to the website of Fitch Rating Japan Limited (<https://www.fitchratings.co.jp/web/>)

**IMPORTANT**

This report is provided as a reference for making investment decisions and is not intended to be a solicitation for investment. Investment decisions should be made at your own discretion and risk. Content herein is based on information available at the time the report was prepared and may be amended or otherwise changed in the future without notice. We make no representations as to the accuracy or completeness. Daiwa Securities Co. Ltd. retains all rights related to the content of this report, which may not be redistributed or otherwise transmitted without prior consent.

**Notification items pursuant to Article 37 of the Financial Instruments and Exchange Law**

If you decide to enter into a business arrangement with our company based on the information described in this report, we ask you to pay close attention to the following items.

- In addition to the purchase price of a financial instrument, our company will collect a trading commission\* for each transaction as agreed beforehand with you. Since commissions may be included in the purchase price or may not be charged for certain transactions, we recommend that you confirm the commission for each transaction. In some cases, our company also may charge a maximum of ¥ 2 million (including tax) per year as a standing proxy fee for our deposit of your securities, if you are a non-resident.
- For derivative and margin transactions etc., our company may require collateral or margin requirements in accordance with an agreement made beforehand with you. Ordinarily in such cases, the amount of the transaction will be in excess of the required collateral or margin requirements\*\*.
- There is a risk that you will incur losses on your transactions due to changes in the market price of financial instruments based on fluctuations in interest rates, exchange rates, stock prices, real estate prices, commodity prices, and others. In addition, depending on the content of the transaction, the loss could exceed the amount of the collateral or margin requirements.
- There may be a difference between bid price etc. and ask price etc. of OTC derivatives handled by our company.
- Before engaging in any trading, please thoroughly confirm accounting and tax treatments regarding your trading in financial instruments with such experts as certified public accountants.

\* The amount of the trading commission cannot be stated here in advance because it will be determined between our company and you based on current market conditions and the content of each transaction etc.

\*\* The ratio of margin requirements etc. to the amount of the transaction cannot be stated here in advance because it will be determined between our company and you based on current market conditions and the content of each transaction etc.

When making an actual transaction, please be sure to carefully read the materials presented to you prior to the execution of agreement, and to take responsibility for your own decisions regarding the signing of the agreement with our company.

Corporate Name: Daiwa Securities Co. Ltd.  
Registered: Financial Instruments Business Operator  
Chief of Kanto Local Finance Bureau (Kin-sho) No.108  
Memberships: Japan Securities Dealers Association  
The Financial Futures Association of Japan  
Japan Investment Advisers Association  
Type II Financial Instruments Firms Association